



2018

CE

CONSTRUCTION EQUIPMENT  
ATTACHMENTS



SSV SERIES



SVL SERIES

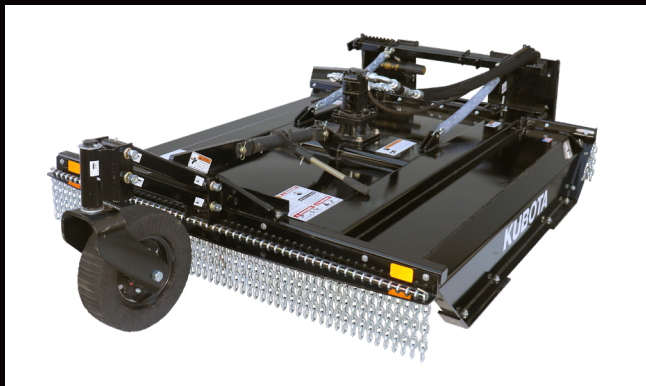


EXCAVATORS



# CE ATTACHMENTS

Kubota branded CE Attachments are manufactured by Land Pride, a leading manufacturer of tractor mounted implements. Land Pride, now a Kubota company, has joined forces with Kubota Tractor Corporation to bring to you a top quality growing line of attachments for your Kubota Skid Steer, Compact Track Loaders and Excavators.



## SC25 SKID CUTTERS

- 60" (1098 lbs), 72" (1350 lbs); 11-30 gpm
- 2" Diameter cut capacity
- 1-1/2" - 18" Cutting height; infinitely variable
- 10 Gauge steel deck; 1/4" side skirt

Ideal for tightly restricted areas under fences, in and around boxed in corner sections of corrals and out buildings, vineyard, nursery rows, wooded lots, and approaches to ditches and waterways.

**AVAILABLE FOR:** SSV65 / SSV75 / SVL75-2 / SVL95-2s



## SC40 SKID CUTTERS

- 60" (1356 lbs), 72" (1718 lbs)
- Motor options: 15-25 gpm and 26-43 gpm
- 4" Diameter cut capacity
- 1/4" Deck thickness
- Pressure gauge
- Tapered full length skid shoes
- Inline bearing

Farmers/ranchers, developers, contractors, and rental yards can clear land or small trees, shrubs, bushes and grass.

**AVAILABLE FOR:** SSV65 / SSV75 / SVL75-2 / SVL95-2s



## SC70 SKID CUTTER

- 72" (2456 lbs)
- 7" Diameter cut capacity
- 4 Swinging blades, reversible
- Retractable front door
- Replaceable carbide teeth on bottom of blade carrier
- Wide, angled full length skid shoes

Farmers/ranchers, developers, contractors, and rental yards can clear land or small trees, shrubs, bushes and grass.

**AVAILABLE FOR:** SVL95-2s









### SG25 SKID GRADERS

- 72" (882 lbs), 84" (958 lbs)
- Standard ripper teeth
- Bi-directional blades; Adjustable cutting angles
- Replaceable skid shoes
- Correct hitch angle
- Bucket carrier on top

Landscapers, contractors, homeowners, rental yards, and developers can level construction sites, or for seed preparation and rejuvenating driveways and parking lots.

**AVAILABLE FOR:** SSV65 / SSV75 / SVL75-2 / SVL95-2s



### SRT25 SKID TILLERS

- 62" (785 lbs), 76" (880 lbs)
- 14-42 gpm
- Case drain protection
- Ripper shanks
- Forward or reverse rotation
- Spiral rotor design with C-shaped bi-direction tines

Forward and reverse rotation tillers are great for seedbed or garden plot soil preparation used in landscaping, nurseries, gardens, and light commercial applications.

**AVAILABLE FOR:** SSV65 / SSV75 / SVL75-2 / SVL95-2s



### SR27 POWERED RAKES

- 72" (766 lbs): 12-24 gpm / 90" (1162 lbs): 15-24 gpm
- Rigid or float option
- Manual or hydraulic angle
- Cast chain housing
- Larger U-bolts on gauge wheel

Landscapers, nurseries, rental yards, and housing contractors can prep and level ground for seeding, remove unwanted material and debris, and rejuvenate driveways and gravel lots.

**AVAILABLE FOR:** SSV65 / SSV75 / SVL75-2 / SVL95-2s



### SRF27 POWERED RAKES

- 72" (711 lbs): 12-24 gpm / 90" (940 lbs): 15-24 gpm
- Fixed hitch - no angling
- Cast chain housing
- Larger U-bolts on gauge wheel

Landscapers, nurseries, rental yards, and housing contractors can prep and level ground for seeding, remove unwanted material and debris, and rejuvenate driveways and gravel lots.

**AVAILABLE FOR:** SSV65 / SSV75 / SVL75-2 / SVL95-2s





### SGC20 CLAW GRAPPLES

- 72" (895 lbs), 84" (999 lbs)
- 6" Teeth spacing
- 1/2" Tooth thickness
- High tensile AR400 steel
- 6" x 6" Frame tube

**AR400**  
Steel

Claw Grapples make quick work of large jobs, and can be used to rake, dig, and move rocks, trees, brush, and construction debris without picking up dirt.

**AVAILABLE FOR:** SSV65 / SSV75 / SVL75-2 / SVL95-2s



### SGR15 ROCK GRAPPLES

- 66" (889 lbs), 72" (938 lbs), 78" (972 lbs)
- 3" Teeth spacing
- 3/8" Tooth thickness
- Grade 80 steel tine material
- 37" Jaw opening

The Rock Grapple features 3" spacing between the teeth allowing small rocks, soil, and debris to be sifted, leaving the larger material locked in its jaw.

**AVAILABLE FOR:** SSV65 / SSV75 / SVL75-2 / SVL95-2s

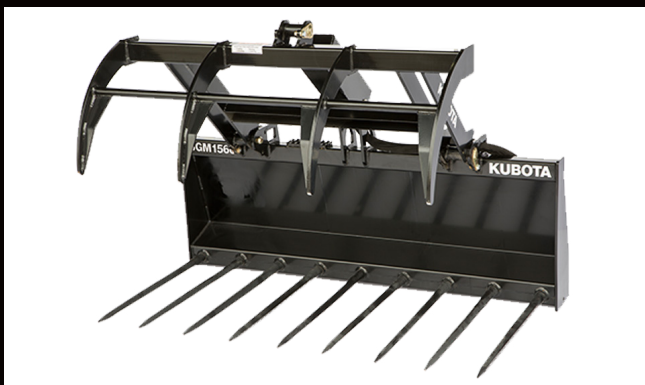


### SRB15 ROCK BUCKETS

- 66" (509 lbs), 72" (550 lbs), 78" (594 lbs)
- 3" Teeth spacing
- 3/8" Tooth thickness
- Grade 80 steel tine material
- 38" Working length

The SGR15 Rock Bucket is designed to do the dirty work, moving volumes of material quickly and efficiently.

**AVAILABLE FOR:** SSV65 / SSV75 / SVL75-2 / SVL95-2s



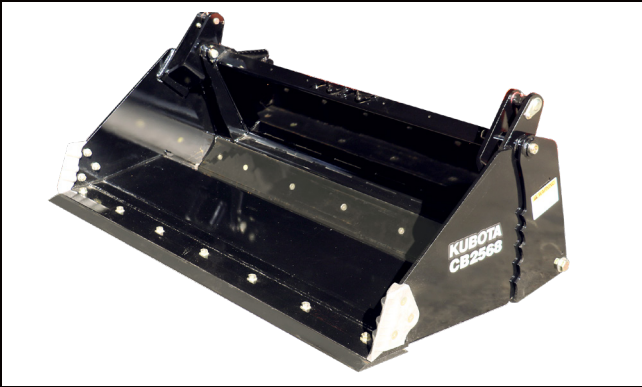
### SGM15 MANURE GRAPPLES

- 66" (596 lbs), 72" (620 lbs), 78" (648 lbs)
- 40" Jaw opening
- Single 2" x 8" cylinder with 1-1/4" rod
- 1-1/4" Greaseable pins on all pivot points

Manure Grapples are a must-have tool for moving hay, barn cleaning, or general yard maintenance and will make chores around the farm a breeze.

**AVAILABLE FOR:** SSV65 / SSV75 / SVL75-2 / SVL95-2s



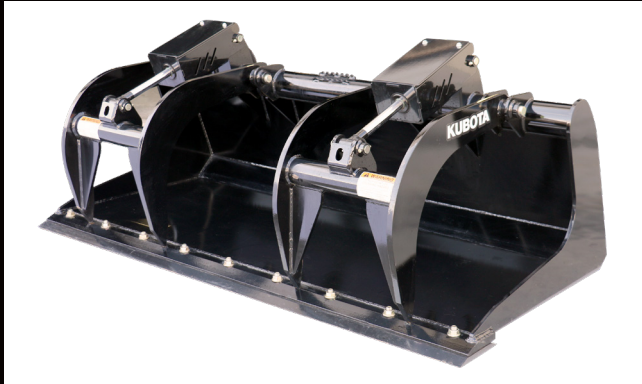


### CB25 COMBINATION BUCKETS

- 68" (996 lbs), 74" (1056 lbs), 80" (1147 lbs)
- Dual cutting edge on jaw
- Bolt-on edge on back blade
- Cylinder protection
- Optional counterbalance valve
- Struck cap. 10–16 cu. ft.; Heaped cap. 15–22 cu. ft.

Concrete contractors, landscapers, dirt contractors, and farmers can perform grapple, dozer blade, bucket, and back drag actions with the CB25.

**AVAILABLE FOR:** SSV65 / SSV75 / SVL75-2 / SVL95-2s



### GB30 SCRAP GRAPPLE BUCKETS

- 68" (1195 lbs), 74" (1251 lbs), 80" (1337 lbs)
- ¼" Two-piece shell
- ½" End panels
- Five bottom wear bars
- ¾" Grapple tines
- Hard hydraulic lines

Demolition crews, recycling plants, municipalities, junk yards, and rental yards can retain debris until it is piled or loaded.

**AVAILABLE FOR:** SSV65 / SSV75 / SVL75-2 / SVL95-2s



### RG30 ROOT GRAPPLES

- 68" (1058 lbs), 74" (1074 lbs), 80" (1170 lbs)
- Gusseted ½" frame tines
- ¾" Thick grapple tines
- Greaseable pivot points
- Wide tine spacing
- Hard hydraulic lines

Farmers, landscapers, nurseries, construction crews, tree services, and rental fleets are able to pick up large debris off of the ground, while separating out dirt and other small material.

**AVAILABLE FOR:** SSV65 / SSV75 / SVL75-2 / SVL95-2s









## LB60 LOADER BOOM

- Weight: 395 lbs
- 6" x 6" Tube construction
- 6,000 lbs. Lift capacity
- Flat front
- Two 1" lifting lugs
- Stabilizer chain connections / side plates

Provides a stable lifting platform for placing and removing concrete forms, and transplanting trees and shrubs.

**AVAILABLE FOR:** SSV65 / SSV75 / SVL75-2 / SVL95-2s



## SSG25 STUMP GRINDER

- 17-32 gpm; 1100 rpm
- Weight: 540 lbs
- 24" Diameter cutting wheel
- Maximum cutting arc of 55 degrees
- Hydraulic motor with electric over hydraulics
- Depth of 8" below ground
- 1/2" Thick by 20" diameter with carbide teeth

A great choice for contractors, landscapers, and forestry departments, the SSG25 turns large stumps into small chips.

**AVAILABLE FOR:** SSV65 / SSV75 / SVL75-2 / SVL95-2s

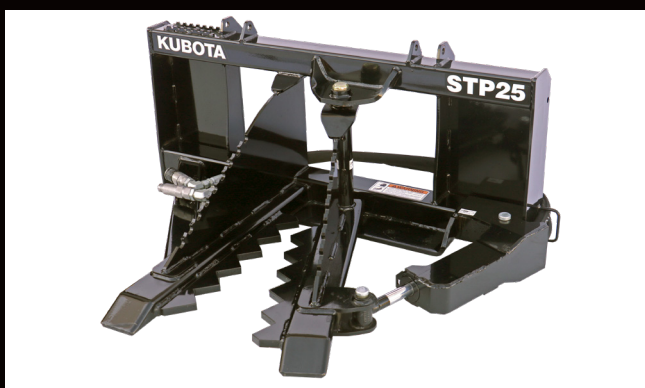


## STP15 TREE/POST PULLER

- 30-65 HP Machine size
- Weight: 240 lbs
- 10" Jaw opening
- Laser cut saw tooth design
- 3" x 3-1/2" Square tubing frame
- Cylinder cover

Great for residential and small landscaper uses with moving shrubs, saplings, and small trees; pulling them from the ground, roots and all.

**AVAILABLE FOR:** SSV65



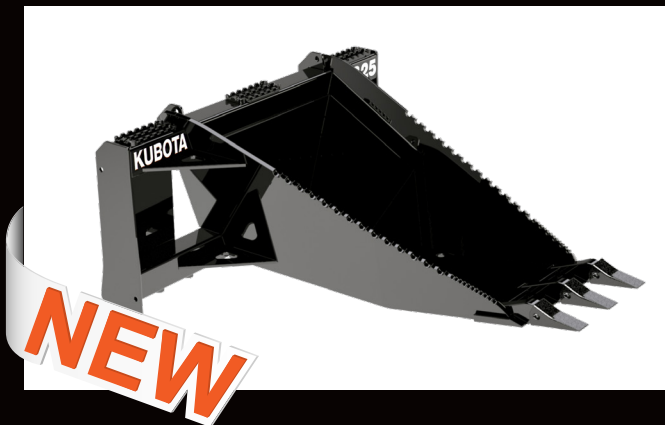
## STP25 TREE/POST PULLER

- Top to bottom pivot shaft
- Weight: 416 lbs
- Interlocking teeth on the jaws
- Reinforced jaws
- Shielded cylinder

Farmers/ranchers, fence builders, homeowners, recycling plants, municipalities and rental yards can use the STP25 to pull trees, bushes, poles, or posts out of the ground, leaving no root or stump to contend with.

**AVAILABLE FOR:** SSV65 / SSV75 / SVL75-2 / SVL95-2s





## UB25 UTILITY BUCKET

- Weight: 420 lbs; Grade 50 steel
- Replaceable digging teeth
- Bent bottom to aide in leverage
- Top tapered ripper teeth in side wall
- Hardened cutting edge
- Built in connection points for tie downs

This construction grade utility bucket acts as a shovel-like attachment for stump and small tree removal, relocating landscaping rocks or boulders, and light trenching.

**AVAILABLE FOR:** SSV65 / SSV75 / SVL75-2 / SVL95-2s



## TC25 TREE CARRIERS

- 36" (285 lbs), 42" (315 lbs), 48" (345 lbs)
- Universal quick-attach plate
- AR400 blade
- Curved and tapered front edge
- Side gussets
- Tie down connection points on hitch

**AR400**  
Steel

The Tree Carrier is available in a variety of sizes to help landscapers and nurseries handle multiple widths of root balls to easily remove, plant and move small trees and shrubs.

**AVAILABLE FOR:** SSV65 / SSV75 / SVL75-2 / SVL95-2s



## SBL25 SNOW BLOWERS

- 66" (827 lbs), 74" (862 lbs), 84" (897 lbs)
- 12-33 gpm
- 3/16" Side plate material
- 24" Diameter impeller; 4 Impeller blades
- 16" Diameter auger; 4 Auger paddles

These snow blowers remove snow from parking lots, farm yards, feedlots, driveways, walking paths, and sidewalks in residential and commercial areas.

**AVAILABLE FOR:** SSV65 / SSV75 / SVL75-2 / SVL95-2s



## SSP15 SNOW PUSHERS

- 72" (685 lbs), 84" (638 lbs), 96" (688 lbs)
- 30" Moldboard, 29" depth
- AR400 Skid shoes
- Rubber pull back blade option
- Adjustable rubber or steel cutting edge

**AR400**  
Steel

The SSP15 pushes snow and other loose materials straight ahead without leaving windrows on the side or damaging the pavement below when using the optional rubber snow blade.

**AVAILABLE FOR:** SSV65 / SSV75 / SVL75-2 / SVL95-2s









### SSP25 SNOW PUSHER

- 96" (928 lbs)
- 36" Moldboard, 35" Depth
- Rubber pull back blade
- Exterior gussets
- Adjustable rubber or steel cutting edge
- AR400 skid shoes

**AR400** Steel

Push snow and slush straight ahead without leaving windrows or use the optional pull back blade to remove snow close to garage doors.

**AVAILABLE FOR:** SSV65 / SSV75 / SVL75-2 / SVL95-2s



### LM25 LIGHT MATERIAL / SNOW BUCKETS

- 84" (719 lbs), 96" (803 lbs), 108" (869 lbs)
- Cut out in backplate for visibility
- BOCE optional
- Heavy-duty construction
- Inside bend gussets

Great for moving large volumes of loose material, snow removal, cleaning bedding and manure from events.

**AVAILABLE FOR:** SSV65 / SSV75 / SVL75-2 / SVL95-2s



### TB25 TRIP BLADES

- 96" (634 lbs), 108" (653 lbs)
- Steel moldboard construction
- 10 Gauge moldboard thickness
- Adjustable spring loaded trip edge protection

Ideal for landscapers, construction companies, farmers, ranchers, homeowners, school systems, and municipalities to push snow or light aggregate materials such as pea gravel or livestock feed.

**AVAILABLE FOR:** SSV65 / SSV75 / SVL75-2 / SVL95-2s



### DZ30 6-WAY DOZER BLADES

- 84" (1345 lbs), 96" (1440 lbs)
- 3/8" Moldboard w/full boxed bracing
- 3/4" x 8" Reversible cutting edge - 3 piece design
- 3" Pivot pins
- 3-1/2" x 8" Welded cylinders
- 1/2" x 4" Full length wear bar

Preparing rough grade, moving material around the job site, pushing silage or manure, cutting or clearing ditches.

**AVAILABLE FOR:** SSV65 / SSV75 / SVL75-2 / SVL95-2s





## PFL45 & PFL55 PALLET FORKS

- PFL45: 48" (422 lbs), PFL55: 48" (446 lbs), 60" (492 lbs)
- Forks adjust to 4" spacing
- Spring loaded toggle fork position lock
- Wide frame with step
- Removeable top center bracket

Useful for landscaping, farming, ranching, construction, nurseries, campuses, theme parks, salvage operations, warehouses, lumber yards, retail outlets, and more.

**AVAILABLE FOR:** SSV65 / SSV75 / SVL75-2 / SVL95-2s

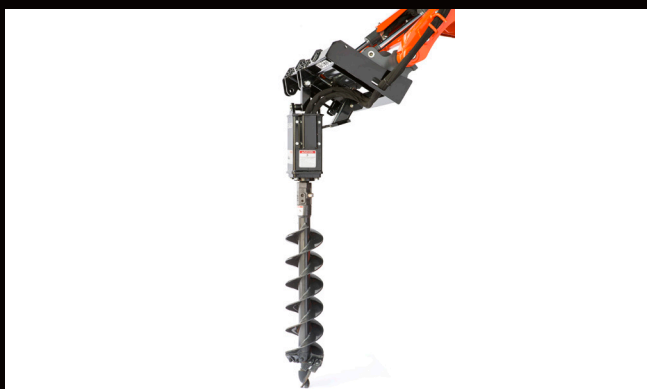


## TR TRENCHERS

- 48" (858 lbs), 60" (886 lbs)
- Adjustable auger
- 15-24 gpm, 25-40 gpm Motor options
- Manual or hydraulic sideshift
- 6" - 10" Width chain options
- Patented depth gauge

Used by rental yards, contractors and developers to dig trenches for water, electrical, drainage or footings in many different soil conditions.

**AVAILABLE FOR:** SSV65 / SSV75 / SVL75-2 / SVL95-2s

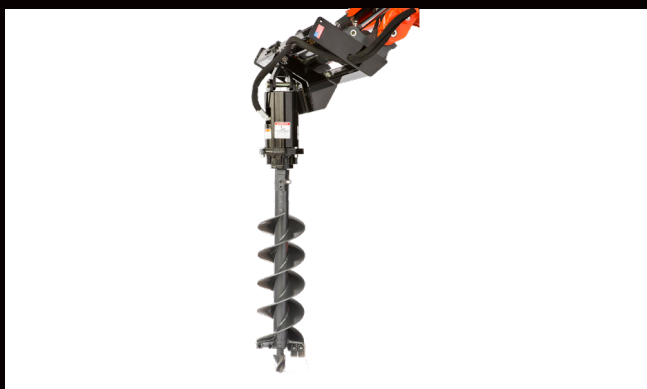


## SA20 SKID AUGER

- 10-30 gpm; 2 Motor options
- Weight: 244 lbs
- Torque: Up to 2620 ft/lb @ 3000 PSI\*
- 6" - 36" Diameter augers
- 2" Hex output shaft
- Center and 18" offset mount to the right
- Planetary gearbox

The SA20 is ideal for nurseries, landscapers, contractors, construction companies, farmers, ranchers, and municipalities.

**AVAILABLE FOR:** SSV65 / SSV75 / SVL75-2 / SVL95-2s



## SA35 SKID AUGER

- 15-30 gpm
- Weight: 362 lbs
- Torque: Up to 2732 ft/lb @ 3000 PSI\*
- 9" - 36" Diameter augers
- 2" Hex or 2-9/16" round output shaft
- Planetary gearbox

The SA35 meets the industrial duty applications of nurseries, landscapers, contractors, construction companies, farmers, ranchers, and municipalities. The 36" auger is perfect for planting ball rooted trees.

**AVAILABLE FOR:** SSV65 / SSV75 / SVL75-2 / SVL95-2s





## EA20 EXCAVATOR AUGERS

- 4 Mounts to fit all Kubota Quick-Attach models (except U25/U27)
- 3 Motor options: 6-15 gpm; 10-20 gpm; 15-30 gpm
- Torque: Up to 2620 ft/lb @ 3000 PSI\*
- Drive units can be used with either SA or EA mounts
- All mounts accept cradle option

Ideal for dirt or building contractors, rental yards and fencing contractors to reach hard to access areas with an excavator.

**AVAILABLE FOR:** KX018-4 / KX71 / KX033 / KX040 / KX057 / KX080  
U17 / U27 / U35 / U55



## EA35 EXCAVATOR AUGERS

- 4 Mounts to fit all Kubota Quick-Attach models (except U25/U27)
- 15-30 gpm Motor
- Torque: Up to 2732 ft/lb @ 3000 PSI\*
- Drive units can be used with either SA or EA mounts
- All mounts accept cradle option

Allow use of an auger to dig holes using an excavators flexibility to access hard to reach areas or dig to greater depths than a CTL/skid steer is capable of.

**AVAILABLE FOR:** KX040 / KX057 / KX080  
U55



## ROCK AUGERS

- 3.5" High strength tube
- 3/4" Double flight bore head
- Bullet style carbide tips
- 1-3/4" Square shanked pilot
- 6", 9", 12", 15", 18" & 24"



## BOLT-ON ROCK HEADS

- Mount to any existing Aggressor auger
- Carbide bullet teeth
- Pilot bit w/teeth
- Wear caps for leading edge of flights
- 6", 9", 12", 15", 18" & 24"

\* Torque based on theoretical 100% efficiency for comparison purposes only.









## AB ANGLE BROOMS

- 72" (865 lbs), 84" (884 lbs)
- Hydraulic range: 12-30 gpm
- Brush speed: 100-230 rpm
- 32" Brush diameter
- Replaceable hex drive system
- Poly, wire, or combination bristles
- Optional dust suppression system with 25 gallon tank

Angle Brooms are ideal for construction site cleanup, road maintenance, light snow removal on paved surfaces, and cart path maintenance.

**AVAILABLE FOR:** SSV65 / SSV75 / SVL75-2 / SVL95-2s

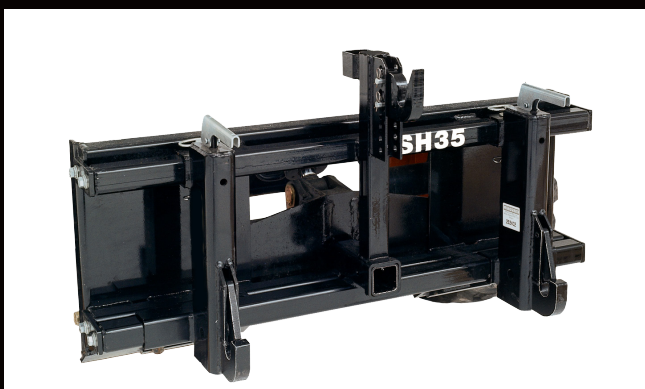


## TH35 TILT HITCH

- 20 Degree tilt in either direction
- Angle gauge and level - standard
- Nylon slide pads

Tilts buckets and other attachments to help contractors, landscapers and homeowners with grading and leveling.

**AVAILABLE FOR:** SSV65 / SSV75 / SVL75-2 / SVL95-2s



## SH35 SKID STEER HITCH

- Fits Cat. 1 or 2 implements
- Adjustable top hook
- Universal skid plate
- Built in 2" receiver hitch
- Automatic locking

Quickly and easily attach to Cat. 1 or 2 implements that are not PTO-driven such as box scrapers, landscape rakes, and soil pulverizers.

**AVAILABLE FOR:** SSV65 / SSV75 / SVL75-2 / SVL95-2s



[KubotaUSA.com](http://KubotaUSA.com)

2018 CE Attachments Product Guide  
Dealers: Contact Land Pride to reorder  
© 2018 Kubota Tractor Corporation

Kubota Tractor Corporation reserves the right to change the stated specifications without notice. The comparisons are for descriptive purposes only and does not provide any express or implied warranty of any nature, including any warranty of merchantability or for a particular purpose. For complete operational information, the operator's manual should be consulted. Kubota Tractor Corporation supplies products and services to United States residents only. For information regarding Kubota products or services outside the United States, see Kubota Corporation's global web site.

4/25/18